

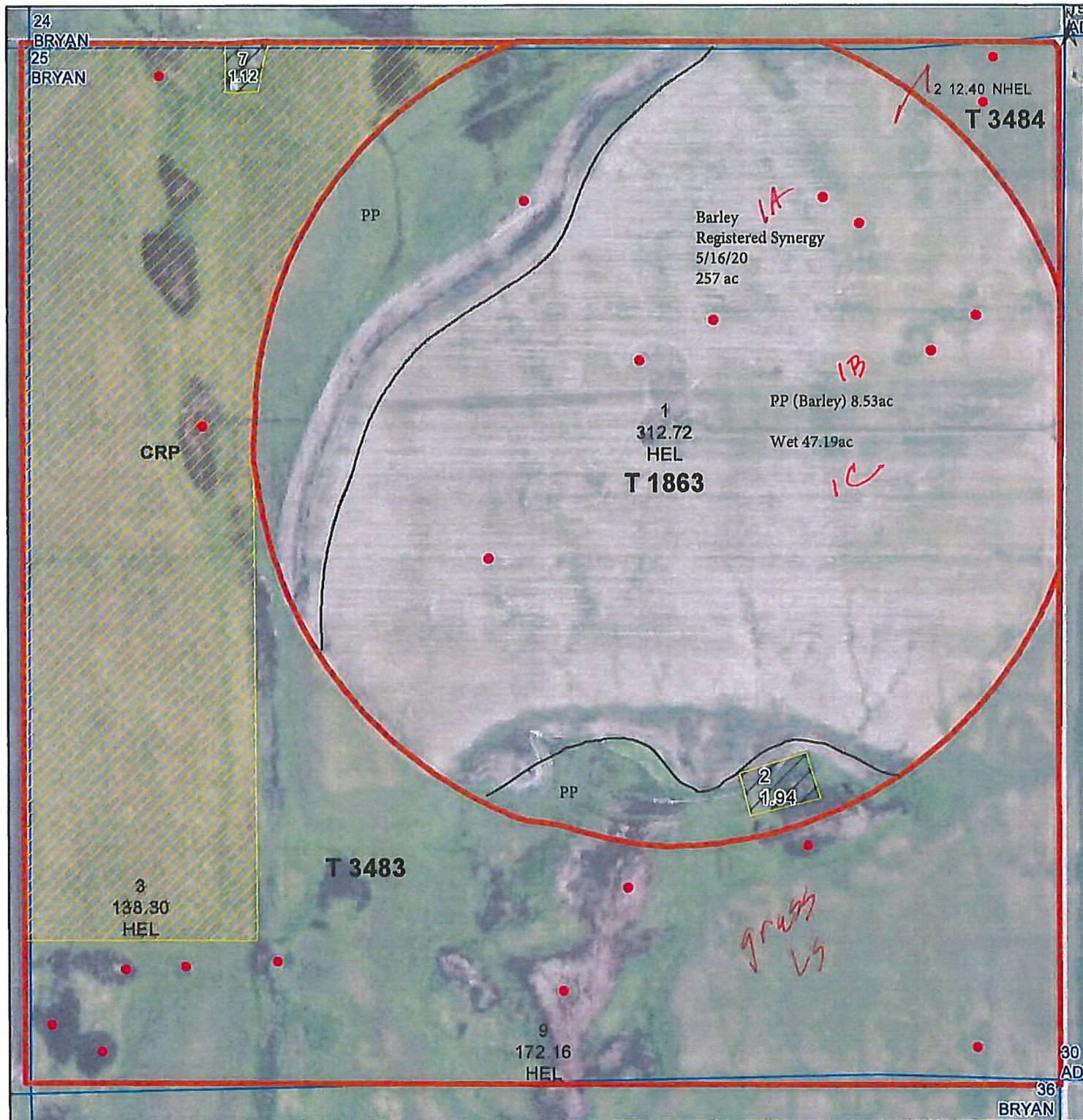


United States
Department of
Agriculture

Gruman N Pivot

Griggs County, North Dakota

Farm 4034



Common Land Unit

- Non-Cropland
- Cropland
- CRP
- Tract Boundary
- PLSS

Wetland Determination Identifiers

- Restricted Use
- Limited Restrictions
- Exempt from Conservation
- Compliance Provisions

Unless Otherwise Noted:

- All crops are for grain
- All crops are non-irrigated
- Shares are 100% to Operator

2020 Program Year

Map Created January 28, 2020

S25 T147N R61W

0 237.5 475 950
Feet

United States Department of Agriculture (USDA) Farm Service Agency (FSA) maps are for FSA Program administration only. This map does not represent a legal survey or reflect actual ownership; rather it depicts the information provided directly from the producer and/or National Agricultural Imagery Program (NAIP) imagery. The producer accepts the data 'as is' and assumes all risks associated with its use. USDA-FSA assumes no responsibility for actual or consequential damage incurred as a result of any user's reliance on this data outside FSA Programs. Wetland identifiers do not represent the size, shape, or specific determination of the area. Refer to your original determination (CPA-026 and attached maps) for exact boundaries and determinations or contact USDA Natural Resources Conservation Service (NRCS). The Imagery displayed on this map was collected in calendar year 2019.

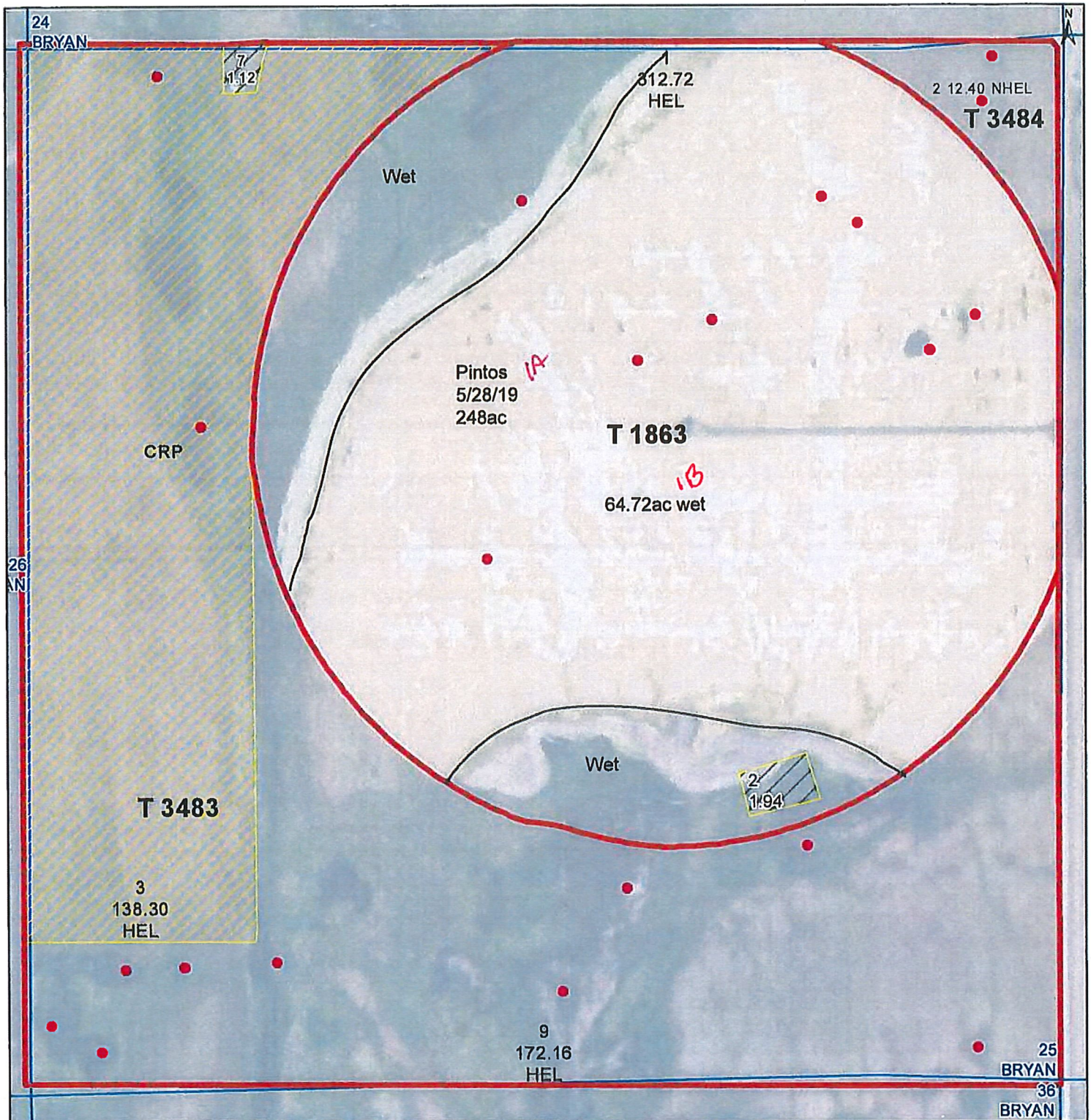


United States
Department of
Agriculture

Gruman N Pivot

Griggs County, North Dakota

Farm 4034



Common Land Unit

- Non-Cropland
- Cropland
- CRP
- Tract Boundary
- PLSS

Wetland Determination

- Restricted Use
- Limited Restrictions
- Exempt from Conservation
- Compliance Provisions

Unless Otherwise Noted:

- All crops are for grain
- All crops are non-irrigated
- Shares are 100% to Operator

2019 Program Year

Map Created April 10, 2019

S25 T147N R61W

RECEIVED

JUL - 8 2019

0 237.5 475 950 Feet

United States Department of Agriculture (USDA) Farm Service Agency (FSA) maps are for FSA Program administration only. This map does not represent a legal survey or reflect actual ownership; rather it depicts the information provided directly from the producer and/or National Agricultural Imagery Program (NAIP) imagery. The producer accepts the data 'as is' and assumes all risks associated with its use. USDA-FSA assumes no responsibility for actual or consequential damage incurred as a result of any user's reliance on this data outside FSA Programs. Wetland identifiers do not represent the size, shape, or specific determination of the area. Refer to your original determination (CPA-026 and attached maps) for exact boundaries and determinations or contact USDA Natural Resources Conservation Service (NRCS). The imagery displayed on this map was collected in calendar year 2018.

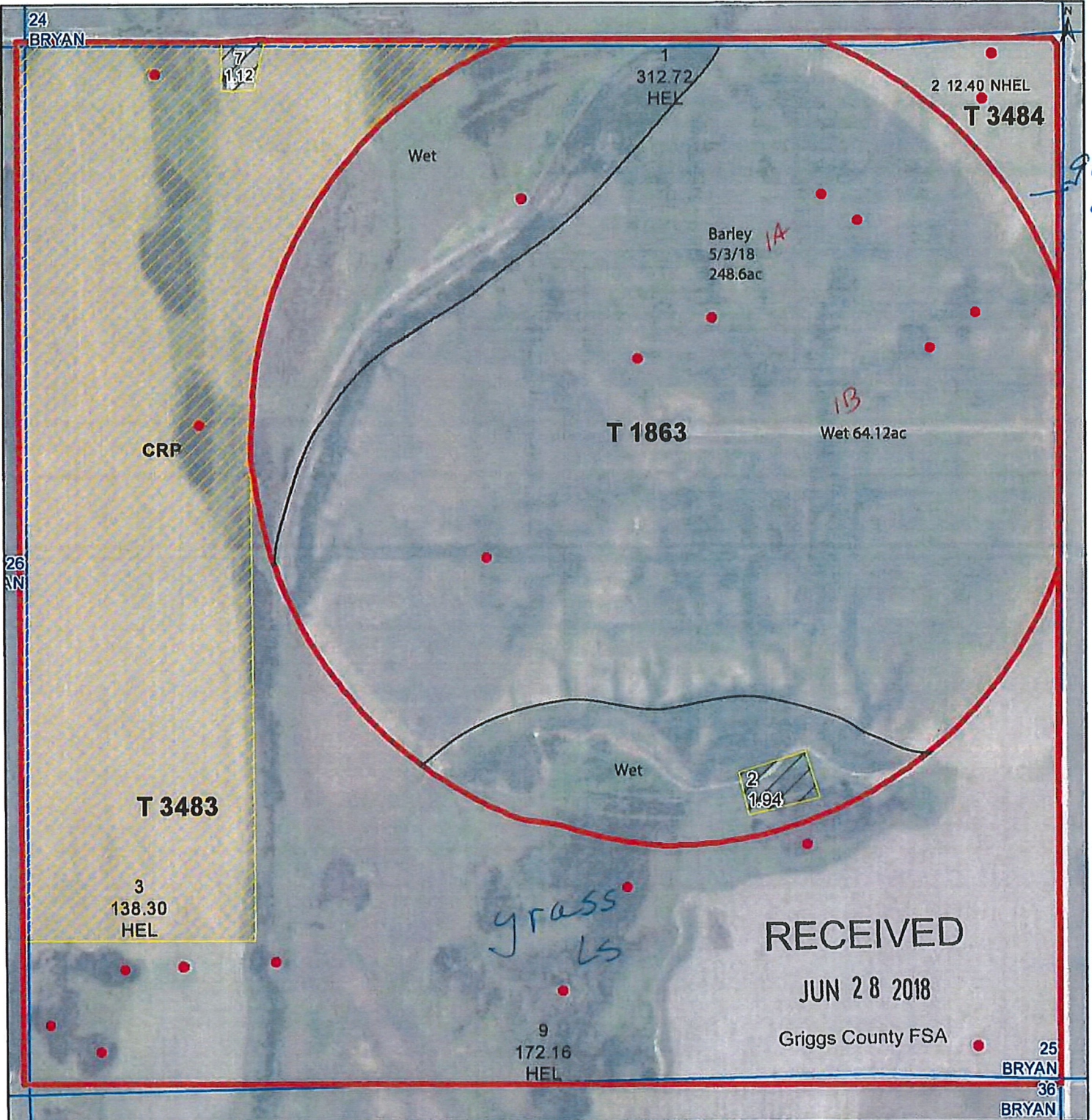


United States
Department of
Agriculture

Druman N Pivot

Griggs County, North Dakota

Farm 3494



Common Land Unit

- Non-Cropland
- Cropland
- CRP
- Tract Boundary
- PLSS

Wetland Determination Identifiers

- Restricted Use
- Limited Restrictions
- Exempt from Conservation
- Compliance Provisions

Unless Otherwise Noted:

- All crops are for grain
- All crops are non-irrigated
- Shares are 100% to Operator

2018 Program Year

Map Created April 10, 2018

S25 T147N R61W

0 237.5 475 950 Feet

United States Department of Agriculture (USDA) Farm Service Agency (FSA) maps are for FSA Program administration only. This map does not represent a legal survey or reflect actual ownership; rather it depicts the information provided directly from the producer and/or National Agricultural Imagery Program (NAIP) imagery. The producer accepts the data 'as is' and assumes all risks associated with its use. USDA-FSA assumes no responsibility for actual or consequential damage incurred as a result of any user's reliance on this data outside FSA Programs. Wetland identifiers do not represent the size, shape, or specific determination of the area. Refer to your original determination (CPA-026 and attached maps) for exact boundaries and determinations or contact USDA Natural Resources Conservation Service (NRCS). The imagery displayed on this map was collected in calendar year 2017.

Farm 3494

S25 T147N R61W

2017 Program Year

Map Created March 20, 2017



Unless Otherwise Noted:

Alfalfa = for Forage

Barley = Spring for Grain

Canola = Spring for Processing

Corn = Yellow for Grain

Flax = Common for Grain

Grass = GMA for Grazing

Mixed Forage = IGS for Grazing

Oats = Spring for Grain

Soybeans = Common for Grain

Sunflowers = Oil for Grain

Wheat = Spring for Grain

All fields are non-irrigated

Shares pay 10% to operator

JUL -5 2017

Common Land Unit

Collaborative Learning

Merill Lynch

Non-Cropland

Cropland

중

PLSS

Wetland Determination

identifiers

Restricted Use

- limited Restrictions

✓ **Eliminated Recalls/Retentions**

■ Example 10.11 Conservation Complications

Compliance FIDVISIONS

responsibility for actual or consequential damage

mination (CPA-026 and attached maps) for exa

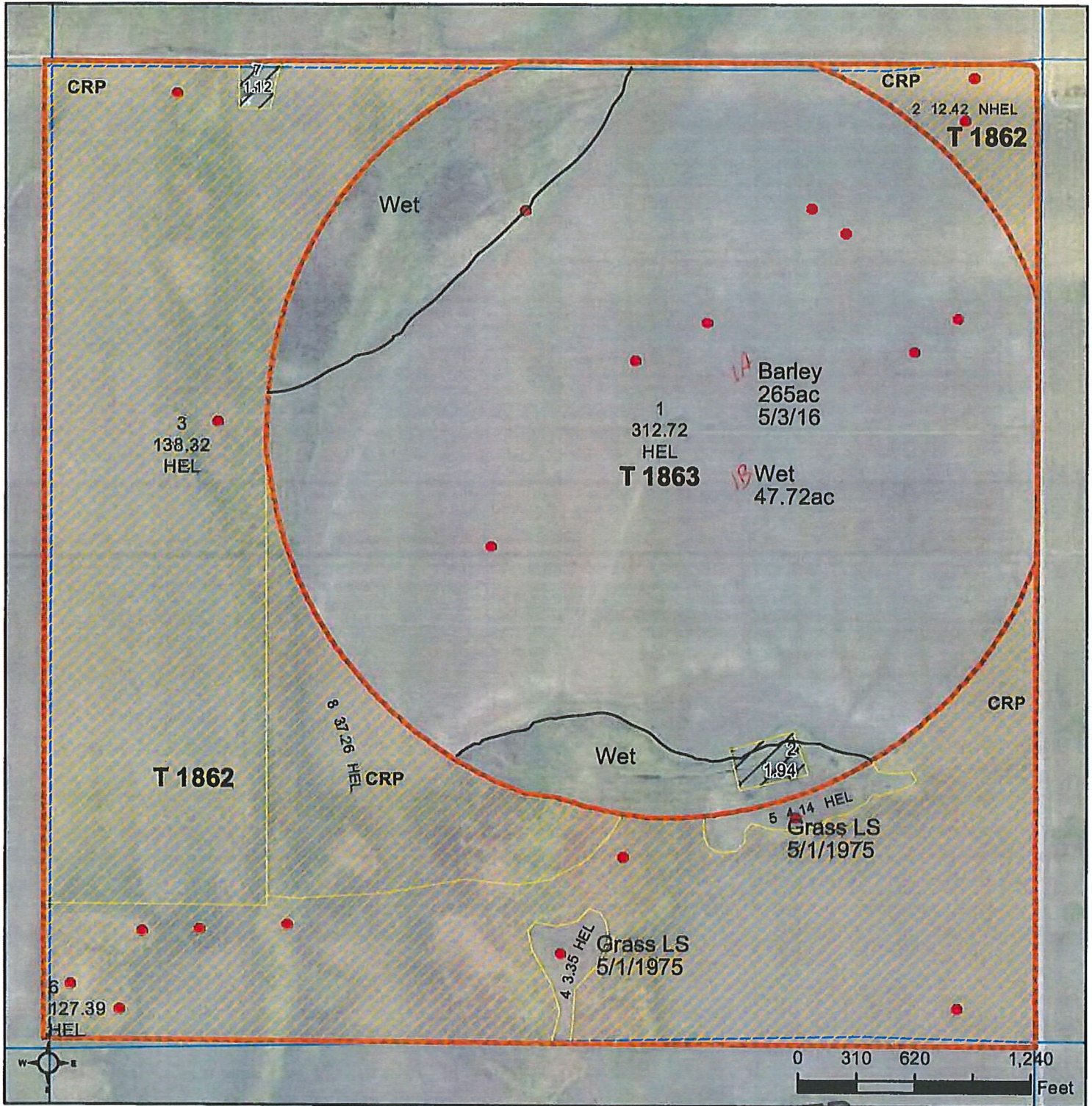
United States Department of Agriculture (USDA) Farm Service Agency (FSA) maps are for FSA Program administration only. This map does not represent a legal survey or reflect actual ownership; rather it depicts the information provided directly from the producer and/or National Agricultural Imagery Program (NAIP) imagery. The producer accepts the data as is and assumes all risks associated with its use. USDA-FSA assumes no responsibility for actual or consequential damage incurred as a result of any user's reliance on this data outside FSA Programs. Wellhead identifiers do not represent the size, shape, or specific delineation (CPA-026 and attached maps) for exact boundaries and determinations or contact USDA Natural Resources Conservation Service (NRCS). The imagery displayed on this map was collected in calendar year 2016.



United States
Department of
Agriculture

Griggs County, North Dakota

All Grain



Common Land Unit
 / Non-Cropland
 Cropland
 CRP
 Tract Boundary
 PLSS

Wetland Determination Identifiers

- Restricted Use
- ▼ Limited Restrictions
- Exempt from Conservation Compliance Provisions

Ben Elder

Barley- 265ac
 Wet- 47.72ac
 Grass LS- 7.49
 CRP- 315.39

Total acres w/CRP = 635.6

RECEIVED 2016 Program Year
 Map Created March 07, 2016

JUN 21 2016

Farm 3494

Griggs County FSA

S25 T147N R61W

United States Department of Agriculture (USDA) Farm Service Agency (FSA) maps are for FSA Program administration only. This map does not represent a legal survey or reflect actual ownership; rather it depicts the information provided directly from the producer and/or National Agricultural Imagery Program (NAIP) imagery. The producer accepts the data 'as is' and assumes all risks associated with its use. USDA-FSA assumes no responsibility for actual or consequential damage incurred as a result of any user's reliance on this data outside FSA Programs. Wetland Identifiers do not represent the size, shape, or specific determination of the area. Refer to your original determination (CPA-026 and attached maps) for exact boundaries and determinations or contact USDA Natural Resources Conservation Service (NRCS).